

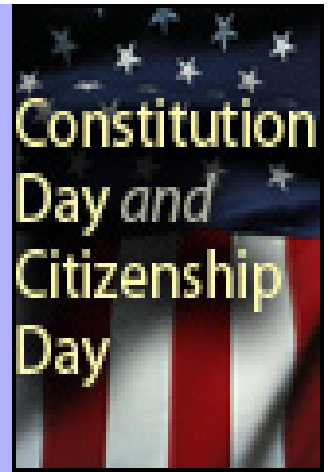


Interface

THE AWARD-WINNING NEWSLETTER
 OF THE LONG BEACH COMPUTER CLUB
 A NON-PROFIT 501 (C)(3) ORGANIZATION
 INCREASED KNOWLEDGE THROUGH SHARING ~ "SYNERGISM"
 WWW.LONGBEACHCOMPUTERCLUB.COM
 EST. 1984

PRESIDENT: JERRY CLARKE
 SEPTEMBER 2010

EDITOR: MITCHEL CHESNEY
 VERSION 24.09



WHAT YOU MISSED LAST MONTH AND COMING UP THIS MONTH

In August an announcement was made that as a cost-cutting measure (we save at least \$100 a month) our Board and General Meetings will now be held at the Red Cross (see back for map, address and other info). We are able to save money here because due to the fact that several of our Members are long-time Red Cross volunteers and our rent and broadband connection are FREE.

Our presenter was Dr. Arnold Bresky. He gave an outstanding lecture on his Brain Tune Up System® and brain health in general. During his talk he gave several websites that you can visit including his own at www.mybraintuneup.com/clubhouse and www.HandsOfKindness.com.

For September, we welcome Mario Gonzales. Mario represents the Port of Long Beach at various meetings and provides overview presentations to community groups, students and residents. In addition, he plans and coordinates community meetings, press events, public hearings and oversees the Internship Program for Community Relations. Mario serves as the Port liaison to Poly High School's Pacific Rim Academy Advisory Board and the Pacific Gateway Workforce Investment Network. He is a graduate from California State University, Long Beach with a Bachelors of Science degree in Health Science and a Master of Science degree in Public Policy and Administration.

Table of Contents

Raffle Winners	2
Bring Cans	2
Digital Photo SIG Is Dark	2
Computer Basics SIG.....	2
Members Only Prize	3
Discovering Windows 7 ~ Part 4.....	4
Welcome Members	6
Microsoft Word Tips	7
Microsoft Excel Tips	7
Microsoft Offers Free "Fix-it" Utilities.....	9
Best Windows Shortcuts.....	11
Club Directory	12
Meeting Map.....	12

GENERAL MEETING PRESENTATION (7:00 PM, MEETING MAP ON BACK PAGE)

- September 9:.....Mario Gonzales with the Long Beach Harbor on Computer Usage
- October 14:.....California Edison
- November 11:.....Iolo System Mechanic
- December 9:.....Holiday Special
- Refreshments Volunteer(s):.....Ralph McCann**

If anyone has ideas for future presenters, please e-mail any information you have to our Program Chairman at: programs@lbibmug.com

BOARD MEETING

Board Meeting are on now held on the same day and location as the General Meeting at 6:00 pm. They are open and all Members are encouraged to attend.

RAFFLE WINNERS

Pinot Gris Wine.....	Jan Christiansen
Emergency Medical Info Flash Drive.....	Wayne Miller
Adjustable Laptop Stand.....	Viv Fitzgerald
9 LED Mini Flashlight.....	Harry Crigger
Spin It Again LP/Tape to CD/MP3 Program.....	Ralph McCann
Digital Alarm Clock.....	Fred Waid
Digital Pedometer.....	Carol Apt

Member Only Prize

Corel Painter X..... Ralph McCann

RAFFLE ITEMS

These are items scheduled to be raffled
at the Next General Meeting

Pinot Grigio Wine.....	<i>Could Be YOURS</i>
9 LED Flashlight.....	<i>Could Be YOURS</i>
Adjustable Laptop Stand.....	<i>Could Be YOURS</i>
CD Wallet.....	<i>Could Be YOURS</i>
Laptop Case.....	<i>Could Be YOURS</i>
Mini Tripod.....	<i>Could Be YOURS</i>
5 Foot Mini USB Cable.....	<i>Could Be YOURS</i>

Member Only Prize

Print Shop v23..... Could Be YOURS

BRING CANS

Please bring ten or more CRV aluminum cans or plastic bottles (soda, beer, water) [value \$1.50 to \$2.00 per pound) to each General Meeting to help support our treasury. We appreciate the interest of Members in donations, however, please do not bring glass jars, steel cans, or Slim Fast Cans, these were refused.

Cans collected from Members came to \$20.59.

Total for the year is: \$90.22.



IMPORTANT! *Even 1 or 2 cans help!* It only takes about 30 for a pound of aluminum cans. Please do not include non-CRV aluminum. Cat Food cans (value, about \$0.04 to \$0.18 per pound) must be in large quantities to be a useful redemption.

Digital Photo SIG

Wayne Miller teaches the Photo Shop SIG on the **3rd Wednesday** of each month at the Red Cross Building.

However, due to work commitments, Wayne will be out of town this month and no meeting will be held. Keep watching for updates.

Computer Basics SIG

Jim Wells continues his SIG to help Members new to computers with the basics of using a computer.

370 Junipero, Long Beach. (Call Jim beforehand at 439-7114 so he knows how many people to expect) 1 p.m. to 3 p.m. on the Last Monday of the Month

Contact Jim Wells at membership@lbibmug.com if you are interested in organizing new SIG's.

SEPTEMBER MEMBER ONLY PRIZE

Design Made Easy

- Dozens of project types, including greeting cards, photo projects, labels, calendars, posters, signs, and business cards & stationery
- Use your own photos or choose from over 270,000 premium graphics in the Art Gallery
- Find inspiration in the Project Gallery, featuring more than 19,000 pre-designed QuickStart templates
- Simple but powerful design and layout tools
- Easy photo editing with Photo Workshop
- Support for borderless printing and other advanced printing options
- Multiple file export options including JPEG, PDF, BMP and TIFF for easy sharing
- Bonus Subscription: 3-month subscription to the Million Image Club

The Print Shop 23 is bigger and better than ever!

The latest version of your favorite desktop publishing solution is all about getting more.

- More Graphics & Images--20,000 new graphics & images from leading stock houses
- More Professionally-Design Projects--1,000 new QuickStart templates giving you more choices across all your favorite project types
- More Content on Disk--Now delivered on DVD, The Print Shop 23 comes with a lot more content. In fact, compared to our previous version, over 3 times more content can be accessed on the disk. Install all the content to your hard drive to save time or save space by accessing from the Art Disk.

Key Features

Each product within The Print Shop family has been designed to give you the tools you need to be your own designer and The Print Shop 23 is no different. You'll find plenty of content to help you create your project and a comprehensive set of flexible, powerful design and layout tools to make it look perfect. Any project type you're planning to create will be ready in a matter of minutes.

Projects for All Your Needs

The Print Shop offers dozens of project types to fit any purpose or occasion. And with over 21,000 QuickStart templates to choose from, there will be no shortage of inspiration. Here's a small sampling of projects you'll be able to create:

- Banners
- Business Cards
- Calendars
- Greeting Cards
- Flyers & Newsletters
- Invitations & Announcements
- Labels
- Posters & Signs
- And more!

Powerful Design Tools

The Print Shop features all the design and layout tools you'll need to make your projects look perfect:

Design & Layout Tools

- Shapes & Lines
- Drawing & Painting
- Object Flip, Invert & Rotate
- Custom & Specialty Graphics
- Compatibility with Avery labels & specialty stock types
- Alignment Controls

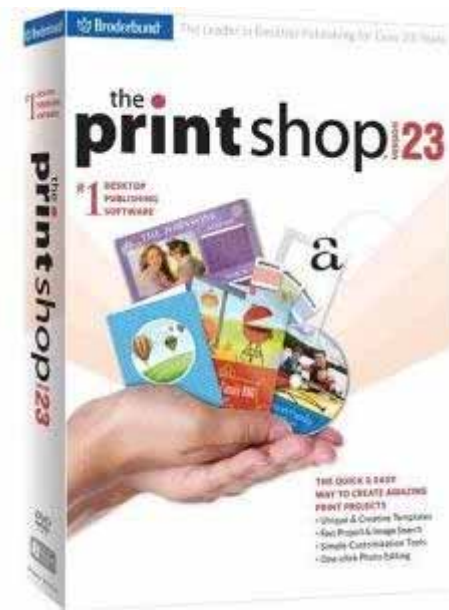
Easy Photo Editing

Handle your photo editing needs with tools built into the product. The Print Shop gives you ultimate control over your photos. Photo Workshop: Quick one-click fixes and edits

- Red-eye Correction
- Blemish Removal
- Creative Crop Shapes
- Artistic Effects

Extensive Art Gallery

Enhance any publication using images, clipart, vector art, photos and illustrations from the Art Gallery. Use the powerful search tools to quickly locate the perfect image from the 420,000+ premium graphics housed within the Gallery.



DISCOVERING WINDOWS 7 ~ PART 4

By Neil Stahfest, Vice President, Tacoma Area PC User Group, Washington

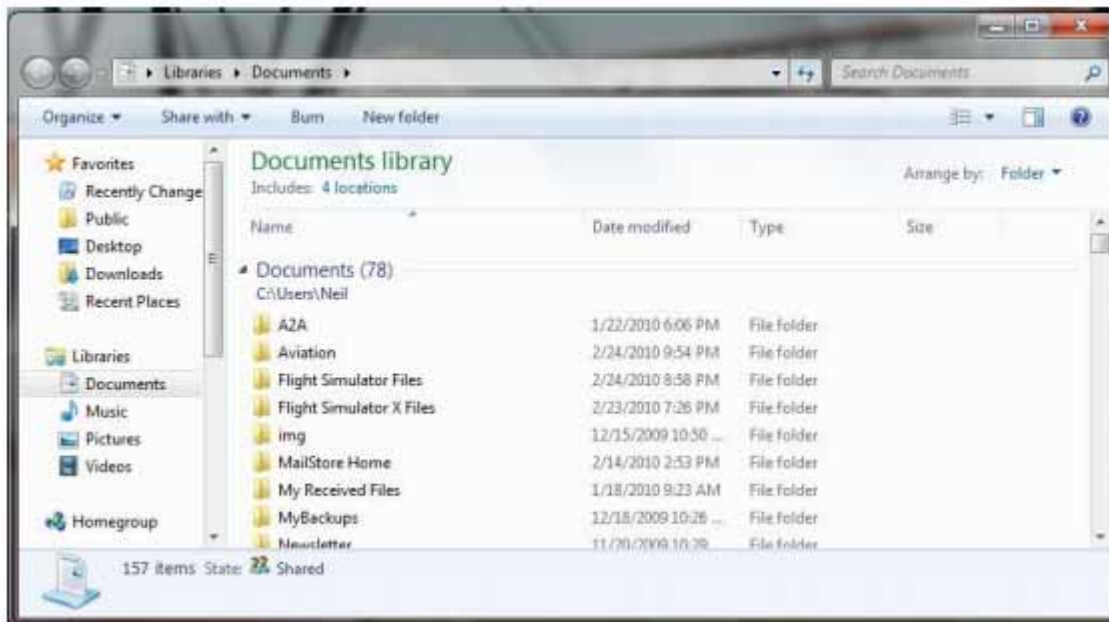
April / May 2010 Issue of the Data Line

NCStahfest (at) msn.com

www.tapcug.org

This month we're going to look at my favorite new Windows 7 features, file search and libraries. I confess, I used Windows 7 like Windows Vista for almost two months before I became aware of these features. If you've used previous versions of Windows, one of the first things you will notice in Windows 7 is that there is no "Search" function listed on the Start menu. Instead, when you click on the Start button, a search box appears directly above the Start button, the normal Start Menu items above it. In addition, any time you open an Explorer window, a search box appears in the upper right-hand corner.

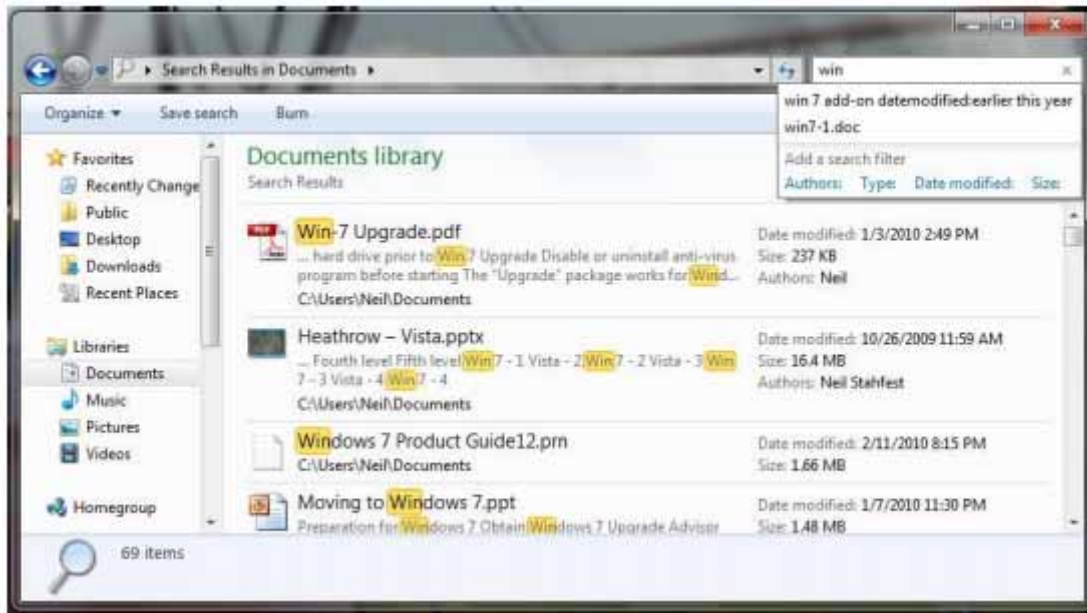
Libraries are a new Windows 7 feature. They make it easier to find things by keeping track of similar files, no matter where you store them. By default, Windows 7 has four libraries: Documents, Pictures, Videos and Music (the Videos library doesn't appear on the Start Menu but we'll address that at another time). To find a document, I can click on the "Start" button and then "Documents." This opens a window which shows my Documents library as shown below.



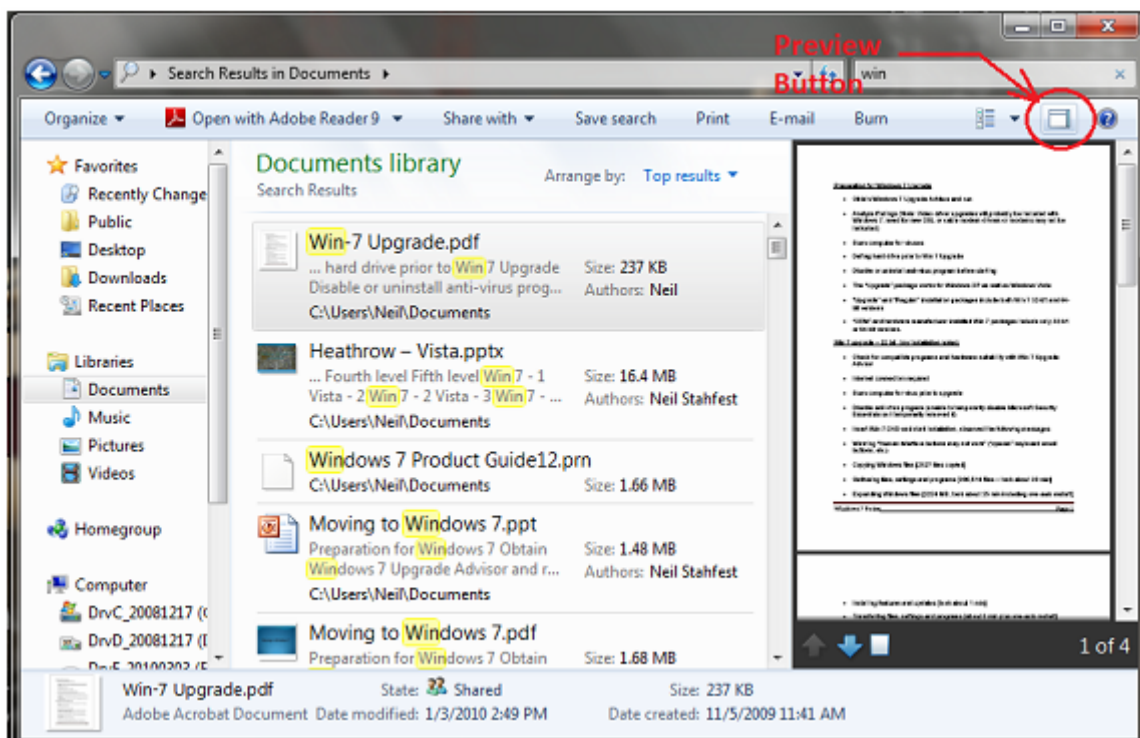
I could look for the document I want by opening folders but Windows 7 gives us an easier way. In the upper right corner of the library window is a search box. As I start to type the name of the document I'm looking for in the box, the list in the main window changes to reflect names that contain the letters or words that I have typed.

(Continued on page 5)

DISCOVERING WINDOWS 7 ~ PART 4 (CONT.)



As I type more letters, the search is refined and fewer names appear as the search criteria is refined. Note that the letter or word that I have typed appears high-lighted in the list of files. I also have the option of adding search filters to restrict my search a range of dates, file size, etc. In my example we see that a number of files match my brief search criteria, “win.” I could click on each of these files to see which one I want but Windows 7 gives us an easier way. I can point and click once on a file to highlight it, and then click on the “Preview” button in the upper right corner of the search window to see what’s inside of the file without actually opening it.



DISCOVERING WINDOWS 7 ~ PART 4 (CONT.)

(Continued from page 5)

By now I think you're starting to see the value of libraries to find files. But suppose you have folders that are not in one of your libraries? For instance, I have folders of pictures stored on an external hard drive. All I have to do is click on the "Start" button, click on "Computer" and go to the icon for my external hard drive. After I click to open the hard drive, I select the folder containing my pictures and right-click. In the window that appears I select "Include in library." Among the library choices that appear I select the "Pictures." Now the pictures on my external hard drive are included in my "Pictures" library and any search of the Pictures library will include them.

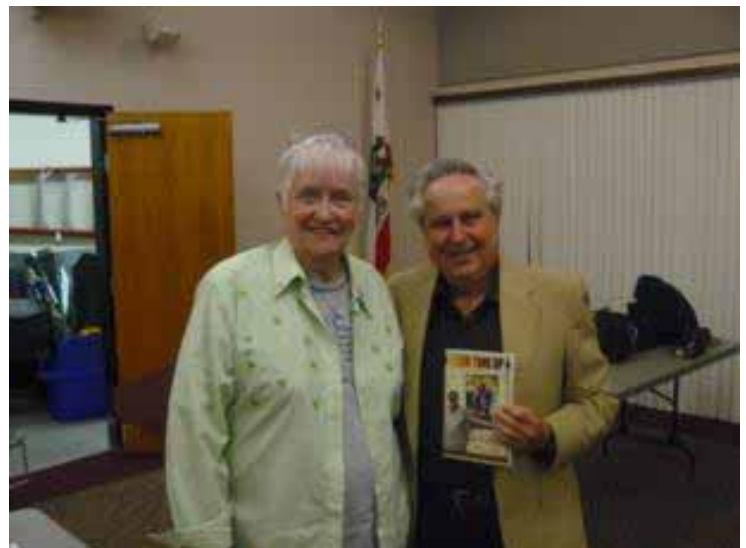
You can change where a library saves files and the order that it searches them. Just click the "Start" button and then one of the library names, such as "Pictures." In the library window, above the file list and next to "Includes," click on "Locations." A new window will open, in this example called "Picture Library Locations." From here you can select click on buttons to add or remove folders. Digital cameras often include image editing and storing software when you purchase them. Many times create new folders to store the pictures from your camera. This "Add" button allows you to include your camera's pictures folder in the Windows 7 library so that they are easily searchable. In addition, if you right-click on a library folder, you can set it as the default folder, where all new related files will be added. You can also change the order in which the listed folders are searched.

You may have noticed in the step above, in addition to selecting one of my default libraries, one of the options was to create a new library. Can you see how you might use this? Suppose you had a folder for Genealogy records. You could select that folder and create a Genealogy library. Similarly, you could select a folder which appears in your Pictures library that contains Genealogy related pictures add it to your Genealogy library. Now you can access the Genealogy pictures through either your Pictures or Genealogy library. As you can see, libraries are a very powerful and useful tool. They provide an easy way to find the files you use most frequently without imposing a rigid organization structure.

WELCOME MEMBERS!

Renewals:

Susan Hansen
Ralph Salisbury
James Stewart



From Our Final Signal Hill Meeting

At right is our Program Chair Viv Fitzgerald with Dr. Arnold Bresky, our Presenter for August.

MICROSOFT WORD TIPS

Slowing Down Mouse Selection

Have you ever noticed that there are times that text scrolls way too fast on your screen when you are trying to select it using the mouse? There are many ways you can attempt to slow down the speed at which text scrolls when you are using the mouse to select text. Perhaps the easiest is to use the keyboard in conjunction with the mouse. You do this by clicking the insertion point at the position where you want the selection to start, and then hold down the **SHIFT** key while you click where you want the selection to end.

However, if you don't want to use the keyboard, and only rely on the mouse, your options are a bit more limited. Perhaps the best idea is to get a mouse that has a scrolling wheel between the two buttons. Using the wheel you can scroll through a document at the speed you want.

Those who have used Word for a while know that there are actually two mouse-scrolling speeds in Word. To use the slower speed when selecting text, move the mouse down to the horizontal scrollbar area. This scrolls downward at a relatively moderate speed. Moving the mouse below the horizontal scrollbar sends the scrolling into full-speed mode. The "moderate speed" zone for scrolling upward is the ruler bar. The actual differences between these scroll speeds depends on the speed of your computer and how many other tasks your system is running.

The final option to try is to slow down the mouse speed using Windows itself. Display the Control Panel, and then open the Mouse applet. (How you access both the Control Panel and the Mouse applet will vary, depending on your version of Windows.) Within the Mouse applet, make sure the Motion tab is displayed. You can adjust the Pointer Speed setting on this tab so it is more toward the Slow side. When you close the applet by clicking on OK, you should notice that your mouse speed is a bit more manageable.

Copyright © 2010 by Sharon Parq Associates, Inc. Reprinted by permission. Thousands of free Microsoft Word tips can be found online at <http://word.tips.net>.

MICROSOFT EXCEL TIPS

Defining Shortcut Keys for Symbols

When you need to insert a special symbol into a cell, the normal way to do it is by using the Insert Symbol dialog box. If you need to insert the same symbol quite often, you may want a way to assign the symbol to a shortcut key so you can insert it easier.

Some symbols have obvious shortcut keys, defined by the folks in Redmond. One of the lesser-known facts is that every symbol has a "shortcut" key, but using that shortcut may not seem that short. How does this work? By holding down the Alt key as you type the ASCII or ANSI code for the symbol.

For instance, let's say you want to enter the cents symbol. If you display the Insert Symbol dialog box and select the cents symbol, at the bottom right of the dialog box you can see the character code for the symbol (it is 00A2). This is a hexadecimal number; you need to convert it to regular decimal notation. You can do this by using the formula =HEX2DEC("00A2"), which returns the value 162. If you remember this code, you can hold down the Alt key as you type the code, with a leading zero, on the numeric keypad.

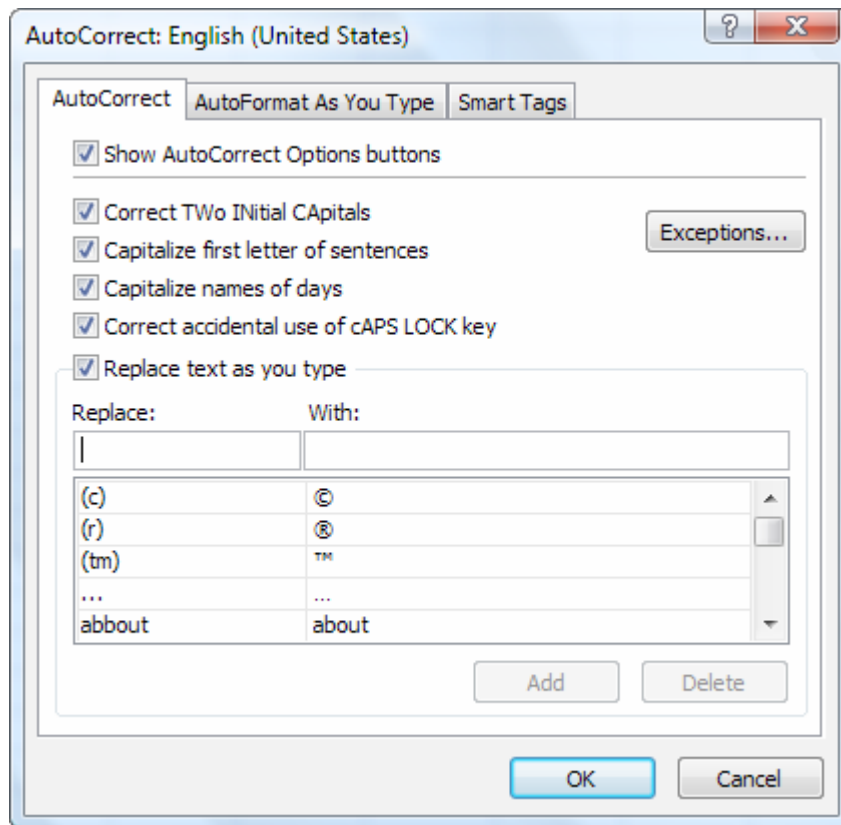
This approach works great if you only need to input a few symbols on a regular basis; it doesn't take much work to remember those few codes you need. However, if you have a lot of symbols you need to work with, then remembering codes becomes more problematic. You could develop your own printed "cheat sheet" for the symbols so that you can refer to it all the time, or you could rely on Excel's AutoCorrect feature to do the remembering for you. Follow these steps:

(Continued on page 8)

MICROSOFT EXCEL TIP (CONT.)

(Continued from page 7)

1. Use the Insert Symbol dialog box to insert the symbol into a cell.
2. Select the cell that contains the symbol.
3. Press **F2** to start editing the cell.
4. Select the symbol, and only the symbol.
5. Press **CTRL+C** to copy the symbol to the Clipboard.
6. Display the AutoCorrect tab of the AutoCorrect dialog box. (In Excel 2010 display the File tab of the ribbon, click Options, click Proofing, and then click AutoCorrect Options. In Excel 2007 click the Office button, click Excel Options, click Proofing, and then click AutoCorrect Options. In older versions of Excel choose AutoCorrect options from the Tools menu.)



The AutoCorrect tab of the AutoCorrect dialog box.

7. In the Replace field, type a short mnemonic for the symbol. This should be a series of letters that are not a real word, such as *hrt*, which might be the mnemonic for a heart symbol.
8. In the With field press **CTRL+V** to paste the symbol from the Clipboard.
9. Make sure the Formatted Text radio button is selected.
10. Click OK.

Now you can just type the mnemonic when you want the symbol to appear. When you type the space bar after the mnemonic, AutoCorrect kicks in and replaces it with the symbol.

MICROSOFT OFFERS FREE "FIX-IT" UTILITIES

**By Ira Wilsker, Member, Golden Triangle PC Group, Texas
Radio Show Host on KLVI and Columnist, the Examiner, Beaumont, Texas
Iwilsker (at) sbcglobal.net**

WEBSITES:

<http://support.microsoft.com/fixit>

<http://fixitcenter.support.microsoft.com>

<https://fixit.support.microsoft.com/reporting/gadget/fixit4me.gadget>

We have all heard the moans and groans about Microsoft's frequent lack of response in terms of its technical support, unless we are willing to pay significant support fees. I have had mixed success at using Microsoft's support forums, including no responses to multiple postings about my Windows 7 upgrade problems; countless other posts in that forum and other Microsoft support forums lament the same sentiment, that Microsoft is sometimes (often) non-responsive. The tide may be turning in a positive direction for Microsoft, as it recently released "Microsoft Fix it Solution Center" (support.microsoft.com/fixit), and "Microsoft Fix it Center Online (beta)" (fixitcenter.support.microsoft.com). For those with Vista or Windows 7, Microsoft also released a "gadget", (fixit.support.microsoft.com/reporting/gadget/fixit4me.gadget) which will display a small image on the desktop showing that latest list of "Fix it" utilities. These small utilities will run on Windows XP, Vista, or Windows 7.

What Microsoft has apparently done is to take many of the most common problems reported by Windows users and create a library of small utilities that can automatically repair those problems. Microsoft says that Microsoft Fix it will "Find and fix common problems." According to Microsoft, "We're working hard to automate solutions to common software problems in an easy, intuitive way that is available when and where you need it. So whether you are looking for a solution in help or support content, or an error report, Fix it provides a way to apply automated fixes, work-arounds, or configuration changes so you don't have to perform a long list of manual steps yourself."

The Microsoft Fix it Solution Center offers online automated fixes for problems with Windows itself, Internet Explorer, Enterprise Products, Office, Email and Messaging (Outlook and Outlook Express), Windows Media Player, Xbox and Zune, and Games and Consumer Products. In reviewing the dozens of fixes available under these headings, I can recognize many of the problems that I have either experienced myself, or have heard of others with those explicit problems. One of the several issues that I have had with my Windows 7 machine is that sometimes the CD/DVD drive will not run, and it shows up on Device Manager with an exclamation point indicating that the drive has a problem. I reinstalled the manufacturer's latest drivers, and reinstalled my CD and DVD software, and still the drive was not always recognized, and therefore would not work. I found a Fix it solution that said that it might be able to repair my settings such that my drive would be recognized, and within seconds of running the Fix it utility, my drive worked flawlessly, and

(Continued on page 10)

MICROSOFT OFFERS FREE "FIX-IT" UTILITIES (CONT.)

(Continued from page 9)

has continued to run since the appropriate Fix it was run. Other Windows fixes include appearance issues, sound and print problems, system and security problems, and update problems. For those not sure if a fix is appropriate, most of the Fix it utilities check to see if that selected fix is appropriate, and will stop it from executing if it is not necessary.

Even though I generally do not use it, Internet Explorer (the "big blue e") is still the most widely used browser in the world, with more users than all other browsers combined. Even though it is widely used, users still have a variety of problems with Internet Explorer. Many of those problems may be instantly resolved by applying one of the fixes listed. By simply clicking on the fix, and following the on screen prompts, the repair will be completed automatically.

There are dozens of other useful utilities in the Microsoft Fix It Solution Center, and it is likely that users who are having problems with Windows and its companion components may find a solution here. It is definitely worthy of a try.

For those who want to have an even more automated solution to their Windows problems, they may prefer the Fix it Center Online (beta). Microsoft's slogan for this particular service is "Click, click, fixed." Microsoft claims that this service is easy, relevant, and allows the user to be in control of the process. The diagnosis and repair service begins by downloading a small (437kb) file "FixitCenter_Run.exe". According to Microsoft, " Fix it Center finds and fixes many common PC and device problems automatically. It also helps prevent new problems by proactively checking for known issues and installing updates. Fix it Center helps to consolidate the many steps of diagnosing and repairing a problem into an automated tool that does the work for you." When run, the downloaded executable file will download a machine specific build that is explicitly for your computer, and highly personalized for the software and hardware on your computer.

For my new Windows 7 computer, the Microsoft Fix it Center beta identified 25 distinct functions on my computer that may be candidates for repair or maintenance. Clicking on an item will give a brief description of what will be repaired. Clicking on the "Run" button will obviously run the appropriate utility. Many of the utilities will perform necessary fixes and adjustments themselves, but some require some degree of interaction from the user. I tried several of the listed utilities, and had mixed results; some worked well and made noticeable improvements, while others were not successful. That is just the results on my particular Windows 7 computer; I had a greater rate of success on my older Windows XP computer, as well as other computers (XP and Vista) that I tried it on.

While not perfect, I can see where many of the issues and problems encountered by Windows users could be easily remedied by utilizing these utilities. It should be noted that the Fix it Center Online is still in beta, which means that it is not a finished and refined product, and that there is still some work to be done on it. Still, these free Fix it utilities should be considered as a potential solution for many of the Windows problems that we encounter.

BEST WINDOWS SHORTCUTS

By Vinny La Bash, Regular Columnist of the Sarasota Personal Computer Users Group, Inc.
Sarasota PC Monitor, May 2010 Issue
www.spcug.org / [vlabash \(at\) comcast.net](mailto:vlabash@comcast.net)

One of the better qualities of a good operating system like Windows is that there is almost always more than one way to do something. There are items you can select from a file menu, use a shortcut or execute some kind of keystroke combination to carry out an action.

There are some things you do almost every time you use your computer. The six following shortcuts all use a similar series of keystrokes. If you don't know about these shortcuts you probably haven't been using computers for very long, and you don't know what you're missing.

It doesn't matter whether you're working with music files, photos, videos, documents, spreadsheets or portions of a document. Simply highlight what you want with your mouse, hold down the **Ctrl** key, then press and release the indicated key. Don't forget to release the Ctrl key when you're done.

For example, to copy a file, some text or any object: Highlight or select the item with your mouse and then hold the **Ctrl** button down, press the **C** key and release. **Ctrl+C**

To paste the copied item or items: **Ctrl+V** (P was already taken for Print)

Sometimes you want to move an object from one location to another: **Ctrl+X**

Select everything on a screen or in a folder: **Ctrl+A**

Print something: **Ctrl+P** (This is why you can't use this combination to paste).

Oops, I shouldn't have done that: **Ctrl+Z** (Undoes your mistakes)

Now that we've covered the basics, we can move on to some good stuff. Microsoft introduced something called the Windows key when it announced Windows 95 back in the Stone Age. Also known as the Super key, Windows logo key, the WinKey, the Start key, and sometimes the Flag key, it has been with us ever since. Tapping the Windows key opens or closes the Start menu. If that were all it did there would be nothing else to say. There are several dozen shortcuts that you can easily use with the Windows key in combination with other keys to call up common functions. Here are a few of them:

Win+D: Shows the Desktop

Win+F: Opens the search function

Win+L: Locks the Desktop and lets you switch users

Win+M: Minimizes all open windows

Win+R: Opens the Run box so you can type DOS like commands

Win+P: Very useful with multiple monitors or an external projector

Win+Spacebar: All open windows become transparent so you can see through to the desktop.

There are many others, but these are probably the ones most computer users would invoke most of the time.

Microsoft sometimes does something really terrific, but for whatever reason doesn't tell anyone about it. The company has created an alternate control panel which blows away any tool I've previously seen. Why the company keeps it a secret is beyond me. To create this tool you will need to create a folder, name it, put in a period, and type something called a Globally Unique Identifier (GUID). A GUID is a special type of identifier used in software applications to provide a unique reference number. The value is represented as a 32 character hexadecimal character string. All you need to be concerned with is to type it accurately. Let Microsoft's engineers worry about the details.

You can create the folder anywhere, but the most logical place for it is on the Desktop. Make sure you're on the desktop and all windows are closed or minimized.

Right-click on an empty area of the desktop and choose New/Folder.

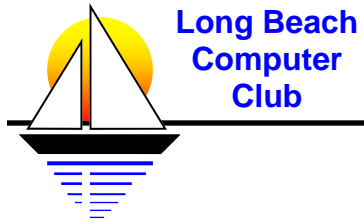
Name the folder. It doesn't matter what you call it, the magic is performed by the GUID.

After the folder name, type a period.

After the period type the GUID {ED7BA470-8E54-465E-825C-99712043E01C} (No spaces are allowed).

Press Enter

Open the folder and you have complete control over Windows 7. You might need several hours to count how many things you can do without having to hunt through layers of screens to access an important, but obscure function.



CLUB DIRECTORY

All area codes are 562 unless noted.

Elected Officers

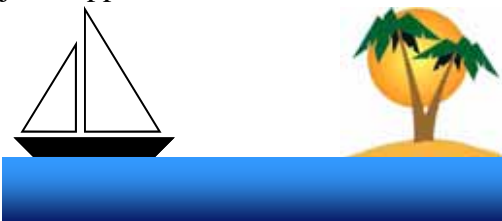
PresidentJerry Clarke
jerryclarke@verizon.net496-1270
Vice President Viv Fitzgerald
fitzi41@verizon.net866-6264
Secretary.....Susan Hansen
NA NA
Treasurer Richard Wescott
richuals@fiddledd.net..... NA

Board of Directors

Editor Mitchel Chesney
mitchelc@earthlink.net.....843-2127
LibrarianHelena Bouchez
helenabme@hotmail.com NA
Membership ChairJim Wells
jim10acre@verizon.net.....439-7114
Program Chair..... Viv Fitzgerald
fitzi41@verizon.net866-6264
Raffle Chair.....John Craig
lbjraig@verizon.net429-3351
Refreshments.....Rotating Volunteers
Anyone interested should e-mail:
Hospitality Chair ..Jan Christiansen
jchristi@earthlink.net.....413-0627
Review Chair..... Zaheer Ahmed
moulvi1952@hotmail.com NA
Special Projects Nate Brightman
nehtan@verizon.net427-5123
Director.....Bob Briggs

SIG (Special Interest Group) Leaders

Computer BasicsJim Wells
jim10acre@hotmail.com439-7114
PhotoShop..... Wayne Miller
jobshopper@dslextreme.com426-9056



Individual [] Family [] Change of Address []

Last Name: _____ Date: _____

First Name: _____ Family Name 1: _____

Family Name 2: _____ Family Name 3: _____

Address: _____ Apt: _____

City : _____ State: _____ Zip: _____

Phone: (____) _____ Occupation: _____
(If retired, previous occupation)

E-Mail address: _____

(A basic e-mail address is required. If you do not already have one we will help you obtain one.)

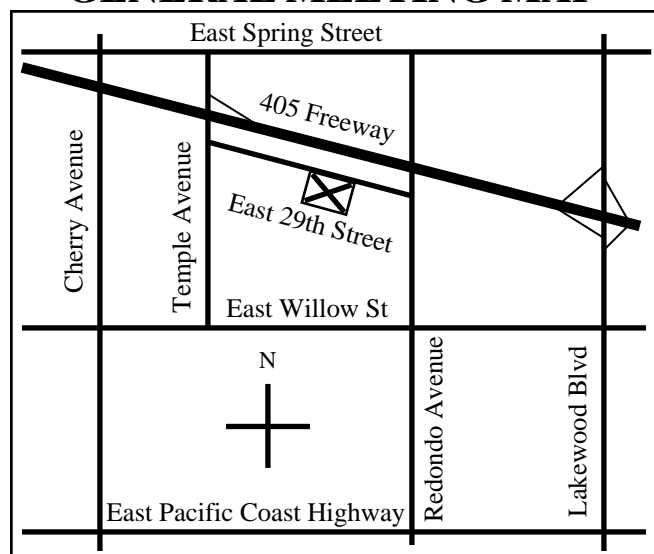
Please fill out completely and return it along with a check for \$35.00 for an Individual Membership or \$45.00 for a Family (up to four people) Membership Payable to "Long Beach Computer Club". Family Membership includes the main Membership, your spouse and/or children, for a total of up to four who all reside at the same address. If you need Membership cards or receipts returned by mail please include a **self addressed and stamped envelope**, otherwise we will be unable to send them by mail. Payment may also be made at the Membership table at any of our General Meetings.

For all mail *other* than Membership Payments, address to: For Membership payments **ONLY**, address to:

Long Beach Computer Club
6444 E. Spring Street PMB 346
Long Beach, CA 90815-1553

Long Beach Computer Club
Attn: Membership
252 Bennett Ave.
Long Beach, CA 90803

GENERAL MEETING MAP



General Meetings are on the the second Thursday of each month and are open to the public free of charge. They are held in the Red Cross, 3150 East 29th Street, Long Beach, CA 90806 at 7:00 p.m. **(NOTE: Follow the BLUE line to the entrance in back.)**